

Evangelical Lutheran Church in America

Eighteenth Annual Pacifica Synod Assembly



**Marked
with the
cross
of Christ
forever**



*“In Christ, you...were marked with the seal
of the promised Holy Spirit.”*

~Ephesians 1:11-14

May 5-7, 2005

Town and Country Resort ~ San Diego

Name _____

Congregation _____



Marked
with the
cross
of Christ
forever



Pacifica Synod—ELCA
Eighteenth Annual
Assembly
May 5-7, 2005

2005 Pre-Assembly Report

Notice to the Reader

This Pre-Assembly Report is distributed to all 2005 assembly voting members. Please insert these pages into a binder or request one at assembly registration.

Carefully review this material as you prepare for the assembly and bring this complete report, including section tabs, with you.

Included in the Pre-Assembly Report are the assembly agenda, general information, proposed budget, nomination reports, reports of the synod staff, agencies and ministry teams, proposed resolutions, and workshop information.

The Pre-Assembly Report will be used frequently during the assembly. Please be sure to study it carefully and bring it with you to the assembly.

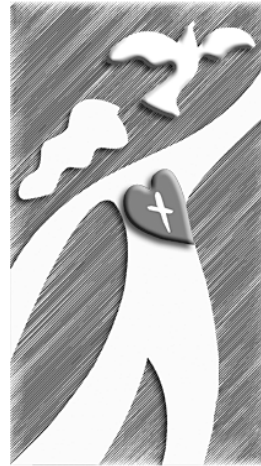
TO: PACIFICA SYNOD VOTING MEMBERS

FROM: 2005 ASSEMBLY PLANNING TEAM

SUBJECT: EIGHTEENTH ANNUAL ASSEMBLY, MAY 5-7, 2005
TOWN & COUNTRY RESORT HOTEL
500 Hotel Circle North ♦ San Diego, California ♦ 619.291.7131

Here is your Pre-Assembly Report for the
**EIGHTEENTH ANNUAL
PACIFICA SYNOD ASSEMBLY**

To help you prepare for the experience of a synod assembly and introduce you to this year's business items and program content, please read carefully through all the enclosed materials. This report contains most of the official documents to be used for the assembly. **BRING THIS PRE-ASSEMBLY REPORT WITH YOU TO THE ASSEMBLY.** There will be a \$20 charge for additional or replacement copies.



**Marked
with the
cross
of Christ
forever**

Voting materials, nametags and meal tickets will be distributed at registration tables located in the Grand Foyer of the Town & Country Resort. Assembly registration will begin at 10 a.m. on Thursday, May 5.

The official hotel check in time is 3 p.m., so it is possible that your room may not be ready when you arrive. In that event, you may store your luggage at the bell desk. Since checkout time is 11 a.m., on Saturday you are encouraged to check out before the morning session begins. Once again, you may store your luggage at the bell desk. **Please be aware that the assembly is not scheduled to adjourn until approximately 12:30 p.m.**

Because the assembly is a legislative meeting, the are tables on the floor are designated "**VOTING MEMBERS.**" A voting member must be seated at one of these tables to speak at the microphone, receive a ballot and be counted in a quorum or division of the house. Non-voting members of the assembly are to be seated at the "**VISITOR**" section at the rear of the assembly hall.

Each voting member receives a Friday lunch ticket as part of the assembly registration packet. The Friday night banquet is not included in the fees. If you did not order additional lunch tickets for spouses/guests for Friday you may do so by calling and mailing a check to Pacifica Synod. Banquet tickets are limited. If you did not order your banquet tickets when completing your registration, please call Lori Seargeant at the synod office, (714) 692-2791, **before April 22 to see if tickets are still available.** Friday lunch tickets are \$17 each. Banquet tickets are \$40 each and include dinner and a special performance of *Late Nite Catechism*.

Casual dress is encouraged throughout the assembly. Remember to bring a sweater/jacket for the meeting room, this Pre-Assembly Report, your assembly offering and cookies for the hospitality center.

Pacifica Synod – ELCA, 23655 Via del Rio, Ste. B, Yorba Linda CA 92887, (714) 692-2791

VOTING MEMBER GUIDE

What is a Synod Assembly?

Just as a congregation has an annual meeting, so each year the synod has an annual meeting when representatives from all the congregations of the synod come together to form the Voting Membership of a Synod Assembly. The purpose of the assembly is to hear reports of work done over the past year on our collective behalf, to elect people to serve in synod and churchwide leadership capacities, to deliberate issues, and to consider and approve a synod budget.

Who attends a Synod Assembly?

The voting membership of the assembly includes laypersons from each congregation; clergy, associates in ministry and diaconal ministers under call in this synod; a 10% representation of the retired on the synod roster; and the Synod Council. As constituted, at least 60% of the voting members of the assembly are laypersons.

Other assembly participants include representatives from the ELCA churchwide offices, synod staff, representatives from the synod program units and related agencies and institutions, special guests and visitors.

Assembly Vocabulary

The words "assembly" and "voting members," rather than convention and delegates, were chosen deliberately to reflect the understanding of the church that members gather in worship, carry out service and assemble occasionally for governance decisions and elections. Assembly participants do not come from a given caucus as politicized delegates to a party convention; rather they assemble as duly selected members of this church with voting responsibilities.

Assembly Program

Interspersed with the business, an assembly program committee plans opportunities for assembly participants to be inspired, grow in understanding and experience a deepening of faith. These opportunities come in the forms of worship, speakers, discussion, workshops, forums, service projects and fellowship.

Assembly Participation

Become a full participant in the Synod Assembly. Attend business sessions, forums and workshops, join in worship and share in discussions. Meet new people and renew old acquaintances. You will be blessed and others will be blessed by your presence.

May the assembly experience strengthen your faith and broaden your understanding; and may it further equip and encourage you as a witness to the gospel and servant of the Lord.

ORIENTATION

Participation

The Synod Assembly is the highest legislative body of the synod. As a voting member of the assembly, you play an important role in making decisions that shape and affect our ministry together. Participation in all of the assembly—plenary sessions, forums and workshops—can help you to weigh out difficult issues.

Study Materials

- Registered assembly participants have received this Assembly Notebook containing the official assembly documents. Voting Members are asked to read and review these materials before the assembly begins.
- Bylaw and constitution changes, resolutions and legislative matters are important items of business.
- Robert's Rules of Order govern parliamentary procedures at the assembly.

Attend Plenary Sessions

Plenary (business) sessions are sometimes prolonged. Important decisions, however, often come near the end of a session. Therefore, it is important for all Voting Members to stay until a session is recessed or adjourned.

Participate in Other Opportunities

Along with the business of the synod, the assembly also provides participants with other unique experiences.

Worship— In addition to gathering for two formal worship services, the assembly also begins each business session with music and Bible study to worship and glorify God.

Knowledge and Growth— Reports, presentations, workshops, forums and displays offer opportunities to:

- Gain new or broader understanding of the mission and ministry for the whole church.
- Grow in faith, be renewed in spirit and refreshed for service.

Community-Building— Organized fellowship opportunities, meal times and interaction with assembly participants from other parts of the church help to build community and strengthen the Body—the Church.

Procedures for Conducting Business

Voting Members, and only Voting Members, are to be seated at tables designated "Voting Member." You must sit at a "Voting Member" table in order to vote or to be counted in a quorum.

Floor microphones are placed on the assembly floor at strategic locations. Voting Members and Voice-Not-Vote Members are allowed to speak on the assembly floor. To do so you must:

- 1) Approach the microphone nearest your table.
- 2) Wait to be recognized by the Chair (usually the Bishop).
- 3) State your name and congregation, organization, or capacity which entitles you to speak.

If you wish to make a motion or amendment to a motion (other than one of a procedural nature), you must first give a written copy to the Secretary. Forms for making a motion or amendment to a motion are available at the Secretary's Table.

What Can Be Done with a Motion?

You may debate an issue which has been properly placed before the assembly. The maker of a motion is entitled to speak first.

FORM OF MAKING MOTIONS BY VOTING MEMBERS

MAIN MOTION

I move

I move the adoption of this report

I wish to present the following resolution _____ I move its adoption

I move the adoption of the proposition in the letter read

POSTPONE INDEFINITELY

I move to postpone this matter indefinitely

AMEND

I move to amend the motion by inserting _____ between _____ and _____

I move to amend the motion by adding _____ after _____

I move to amend the motion by striking out _____

I move to amend the motion by striking out _____ and inserting _____

I move to amend by striking out the motion and substituting this motion (read or state substitute motion)

COMMIT or RE-COMMIT

I move that this matter be referred to a committee of _____ to be named by _____ with instruction _____

POSTPONE TO A SET TIME

I move that this matter be postponed to _____

I move that this matter be postponed to _____ meeting at (name time) and be made A Special Order of Business (2/3 vote required)

PREVIOUS QUESTION

I call for (or move) the previous question (2/3 vote)

TABLE

I move that this matter be laid on the table (no debate)

TAKE FROM THE TABLE

I move that the motion _____ be taken from the table (no debate—motion made when no business is pending)

APPEAL

I appeal from the decision of the Chair (in order only after the chair has made a decision or ruling)

OBJECTION TO CONSIDERATION OF A QUESTION

I object to the consideration of this question (2/3 vote)

SUSPEND THE RULES

I move that we suspend the rules for the purpose of _____

WITHDRAW A MOTION

I ask leave to withdraw my motion (no second required—only maker of motion may ask leave)

QUESTION OF PRIVILEGE (Personal or General privilege)

I rise to a question of privilege (state your question)

I rise to a parliamentary inquiry (state your inquiry)

I rise to a point of order (state your point)

ORDERS OF THE DAY

I move we return to the orders of the day

READING PAPERS

I move that the paper be read or re-read

TO FIX THE TIME TO WHICH TO ADJOURN

I move that when we adjourn, we adjourn to meet _____

ADJOURN

I move that we adjourn (no debate)

RESCIND

I move to rescind the action taken, which was _____ (2/3 vote)

I give notice that I shall move to rescind _____ (no second required at the next meeting—at the next meeting, offer the Motion to Rescind)

SYNOD CONGREGATIONS BY CONFERENCE

#1 Sonshine Conference: (14)– Dean: Mark Will, St. Luke, La Mesa

Alpine, Good Shepherd of the Hills	San Diego, Calvary
Chula Vista, St. Mark	San Diego, College
Chula Vista, Glory Lutheran Church †	San Diego, Ethiopian Evangelical
El Cajon, St. John	San Diego, Filipino ††
La Mesa, Shepherd of the Valley	San Diego, Hope
La Mesa, St. Luke	San Diego, St. Timothy
Lemon Grove, Lemon Grove	Santee, Carlton Hills

#2 West San Diego Conference: (13)– Dean: Andy Taylor, St. Andrew, San Diego

La Jolla, La Jolla	San Diego, Gethsemane
San Diego, All Saints	San Diego, Our Savior
San Diego, Ascension	Nuestro Salvador
San Diego, Atonement	San Diego, St. Andrew
San Diego, Christ	San Diego, St. Peter's by the Sea
San Diego, Clairemont	San Diego, Taiwanese
Iglesia Luterana Clairemont	San Diego, Tierrasanta
San Diego, First	

#3 Harvest Conference: (11)– Dean: Karin Boye, San Marcos, San Marcos

Carlsbad, La Costa Community	Ramona, Spirit of Joy
Encinitas, Bethlehem	San Diego, Penasquitos
Escondido, House of Prayer	San Marcos, San Marcos
Fallbrook, Christ the King	Solana Beach, Calvary
Christo Rey	Vista, First
Oceanside, King of Kings	Primera Iglesia
Poway, Incarnation	

#4 Raincross Conference: (14)– Dean: Mark Allert, Peace, Corona

Corona, Peace	Riverside, Angels of Grace
Hemet, Spirit of Joy	Riverside, Eden
Hemet, Trinity	Riverside, Hope
Lake Elsinore, Shepherd of Life	Riverside, River of Light ††
Moreno Valley, Lord of Life	Riverside, Trinity
Norco, HKBP California	Sun City, Faith
Norco, Bethany	Temecula, Hope

#5 Big Bear Conference: (13)– Dean: Joe Matoush, 29 Palms and Joshua Tree

Banning, Our Savior	Rialto, Church of the Cross
Barstow, Shepherd of the Desert	San Bernardino, Highland Avenue
Big Bear City, Spirit of Peace †	San Bernardino, Our Savior
Joshua Tree, Faith	Twentynine Palms, Prince of Peace
Palm Desert, Hope	Victorville, Trinity
Palm Desert, St. John	Yucaipa, Faith
Redlands, First	

#6 Mariposa Conference: (7)– Dean: Jake Bell, Gloria Dei, Fontana
 Chino, Christ Ontario, Prince of Peace
 Claremont, Good Shepherd Rancho Cucamonga, Cross & Crown
 Fontana, Gloria Dei Upland, Grace
 Ontario, First

#7 Saddleback Conference: (11)– Dean: Seth Britton, Red Hill, Tustin
 Corona del Mar, Church of the Master Newport Beach, Newport Harbor
 Dana Point, Gloria Dei Rancho Santa Margarita, Community
 Irvine, Good Shepherd San Clemente, Christ
 Laguna Niguel, Mission San Clemente, Our Savior
 Laguna Woods, Church of the Cross Tustin, Red Hill
 Mission Viejo, Mount of Olives

#8 Son & Surf Conference: (14)– Dean: Minh-Hanh Nguyen, St. Olaf, Garden Grove
 Cypress, Mt. Calvary Orange, Our Saviour
 Fountain Valley, King of Glory Santa Ana, Calvary
 Garden Grove, Our Redeemer Santa Ana, St. Peter
 Garden Grove, St. Olaf San Pedro
 Huntington Beach, Grace Seal Beach, Redeemer
 Huntington Beach, Resurrection Westminster, Reformation
 Los Alamitos, Bethlehem Westminster, Westminster
 Orange, Christ

#9 Rejoice Conference: (16)– Dean: David Hodgson, St. Luke, Fullerton
 Anaheim, Faith La Habra, Emanuel
 Anaheim, Grace La Mirada, Prince of Peace
 Anaheim, Grace Taiwanese Whittier, St. Andrew
 Anaheim, Lamb of God Iglesia Luterana
 Buena Park, Good Shepherd Whittier, Salem
 Fullerton, First Whittier, Shepherd of the Hills
 Fullerton, St. Luke Yorba Linda, Emanuel Danish
 Fullerton, St. Paul Yorba Linda, Messiah
 La Habra, Church of the Master

#10 Hukilau Conference: (11)– Dean: Ruth Peterson, Joy of Christ, Pearl City
 Honolulu, Calvary Kihei, Kihei
 Honolulu, Chinese Lutheran Lihue, Lihue
 Honolulu, Luth. Church of Honolulu Mililani, Christ
 Honolulu, Prince of Peace Pearl City, Joy of Christ
 Kailua, St. John Waianae, Maluhia
 Kailua-Kona, L.C. of the Holy Trinity

† Synodically Authorized Worshiping Community

†† Forming Congregation

